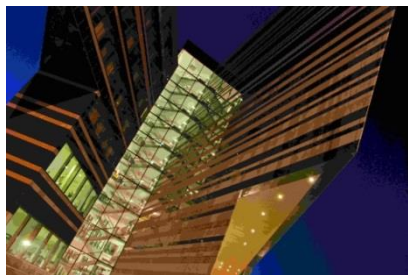


## Invitation to: 'What every Hematologist Should Know about CLL in 2018'

We hereby invite you to this meeting which will include keynote talks and sessions on clinical and translational issues concerning novel treatment regimens and updated data on efficacy and safety with the following speakers:

- **Paolo Ghia:** CLL: a complex disease
- **Carsten Niemann & Anders Österborg:** State of the art in treatment of CLL
- **Susan O'Brien:** New drugs in the pipeline
- **Jennifer Brown:** Incorporation of microenvironmental findings into design of new clinical trials
- **Elias Campo:** The genomic landscape of CLL - have we got lost?
- **Jennifer Woyach:** Mutations and resistance to small therapeutic molecules; a growing clinical problem
- **Davide Rossi & Richard Rosenquist:** How to identify high-risk patients?
- **Peter Hillmen:** How to treat high-risk patients
- **Michael Hallek:** Future directions



In addition, diagnostic work up, 2nd line treatment, the elderly frail patient with CLL, translational and clinical trial as well as registry research will be addressed through breakout sessions and workshops.

We encourage submission of abstracts (250 words max) for oral or poster presentation during the meeting. All kinds of CLL research, including but not limited to basic/clinical/translational/registry-based projects in progress are invited for presentation. **Abstract deadline March 1<sup>st</sup> 2018** to [coordinator@nordic-cll.org](mailto:coordinator@nordic-cll.org)

*The participation is free of charge, and travel costs on economy level and hotel may be arranged/reimbursed.*

**Venue:** Clarion Sign, Östra Järnväggsgatan 35, Stockholm (5 mins from Arlanda Express)

**Please, sign up by sending the attached registration form to: [coordinator@nordic-cll.org](mailto:coordinator@nordic-cll.org) no later than Thursday 1<sup>st</sup> February 2018 with indication which workshop you want to participate in**

Find updates, final program and more details on [www.nordic-cll.org](http://www.nordic-cll.org).

On behalf of the Nordic CLL Study Group:  
Anders Österborg, Karolinska Institutet, Stockholm, Sweden  
Richard Rosenquist, Karolinska Institutet, Stockholm, Sweden  
Vesa Lindström, Helsinki University Hospital, Finland  
Hoa Tran, Akershus Universitetssykehus, Norway  
Ilse Christiansen, Aalborg Universitetshospital, Denmark  
Carsten Utoft Niemann, Rigshospitalet, Copenhagen, Denmark

*The meeting is sponsored by pharmaceutical companies which have had no influence on the program*

